

Eclipse BoostPak

Packaged Gas Booster Systems

Series MD

Version 2

Medium Flow Duplex

Parameter	Specification							
Model Number	MD3316	MD3314	MD3412	MD4414	MD4617	MD4619	MD4623	MD4628
Assembly Number	10024890	10024891	10024892	10024893	10024894	10024895	10024896	10024897
Booster	HBLC3316-3/4	HB3314-1/2	HB3412-1/2	HB4414-1	HB4616-1	HB4619-2	HB4623-5	HB4628-5
Minimum Flow (cfh) ^a	150	1,060	2,320	4,080	7,700	5,900	22,000	9,700
Maximum Flow (cfh) ^a	5,500	5,300	11,600	20,400	23,000	17,800	33,000	14,600
Pressure Boost ("w.c.) ^b	10	9	7	7	13	18	26	34
Turndown	37:1	5:1	5:1	5:1	3:1	3:1	1.5:1	1.5:1
Primary Voltage	b, c, d, e	b, c, d, e	b, c, d, e	c, d	c, d	c, d	c, d	c, d
Motor Horsepower	3/4	1/2	1/2	1	1	2	5	5
Approximate Wt. (lbs) ^f	1,450	1,350	1,450	1,500	2,000	2,300	2,700	3,000

Notes: a Ratings are nominal, in CFH of natural gas, at standard conditions and depend on customer interface piping.

b 115/230 VAC, 1 Φ , 60 Hz

c 230/460 VAC, 3 Φ , 60 Hz

d 208 VAC, 3 Φ , 60 Hz

e 208 VAC, 1 Φ , 60 Hz

f Weight is approximate.

NEMA 4 rating; NEMA 7 rating option available (footprint increases with this option).

Dimensional Information in Millimeters (in)

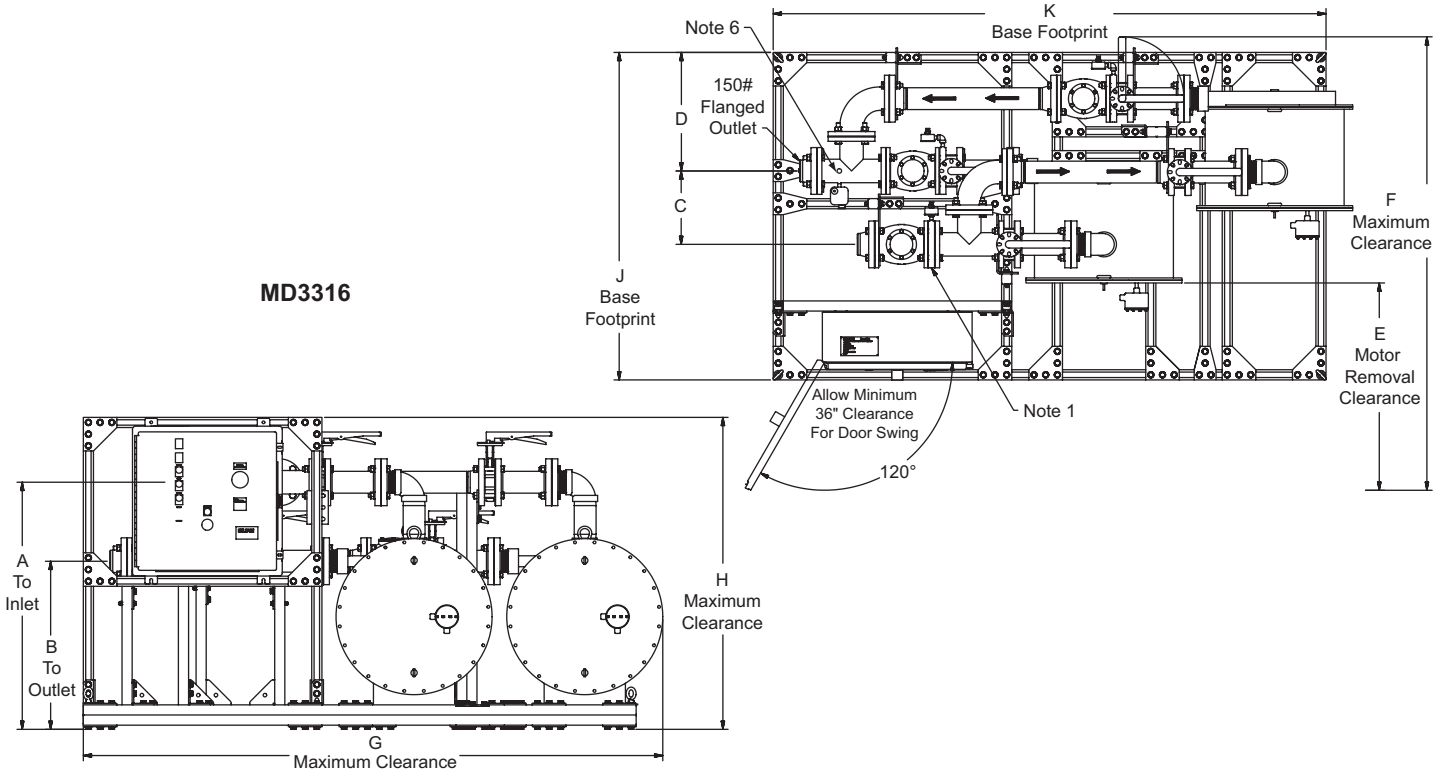
BoostPak	Flange Sizes (150#)		Connection Data			
	Inlet	Outlet	A	B	C	D
MD3316	3	3	1006 (39.6)	685 (27)	297 (11.7)	482 (19.0)
MD3314	3	3	348 (13.7)	672 (26.5)	166 (6.5)	482 (19.0)
MD3412	4	3	240 (9.5)	612 (24.1)	233 (9.2)	522 (20.6)
MD4414	4	4	278 (11.0)	672 (26.5)	204 (8.0)	523 (20.6)
MD4617	6	4	259 (10.2)	743 (29.2)	307 (12.1)	623 (24.5)
MD4619	6	4	348 (13.7)	881 (34.7)	310 (12.1)	591 (23.3)
MD4623	6	4	373 (14.7)	954 (37.6)	322 (12.7)	592 (23.3)
MD4628	6	4	450 (17.7)	1113 (43.8)	316 (12.4)	594 (23.4)

BoostPak	Maximum Envelope					
	E	F	G	H	J	K
MD3316	1219 (48)	2219 (87.4)	2358 (92.8)	1270 (50.0)	1333 (52.5)	2250 (88.6)
MD3314	737 (29)	1896 (74.6)	2106 (82.9)	1450 (57.1)	1333 (52.5)	2050 (80.7)
MD3412	762 (30)	2057 (80.7)	2101 (82.7)	1400 (55.1)	1333 (52.5)	2050 (80.7)
MD4414	762 (30)	2007 (79.0)	2236 (88.0)	1270 (50.5)	1333 (52.5)	2180 (85.8)
MD4617	762 (30)	2181 (85.9)	2644 (104.1)	1550 (61.0)	1583 (62.3)	2600 (102.4)
MD4619	711 (28)	2094 (82.5)	2689 (105.9)	1700 (66.9)	1533 (60.3)	2600 (102.4)
MD4623	889 (35)	2435 (95.8)	3065 (120.7)	1750 (68.9)	1683 (66.2)	3000 (118.1)
MD4628	965 (38)	2570 (101.2)	3069 (120.8)	1900 (74.8)	1683 (66.2)	3000 (118.1)

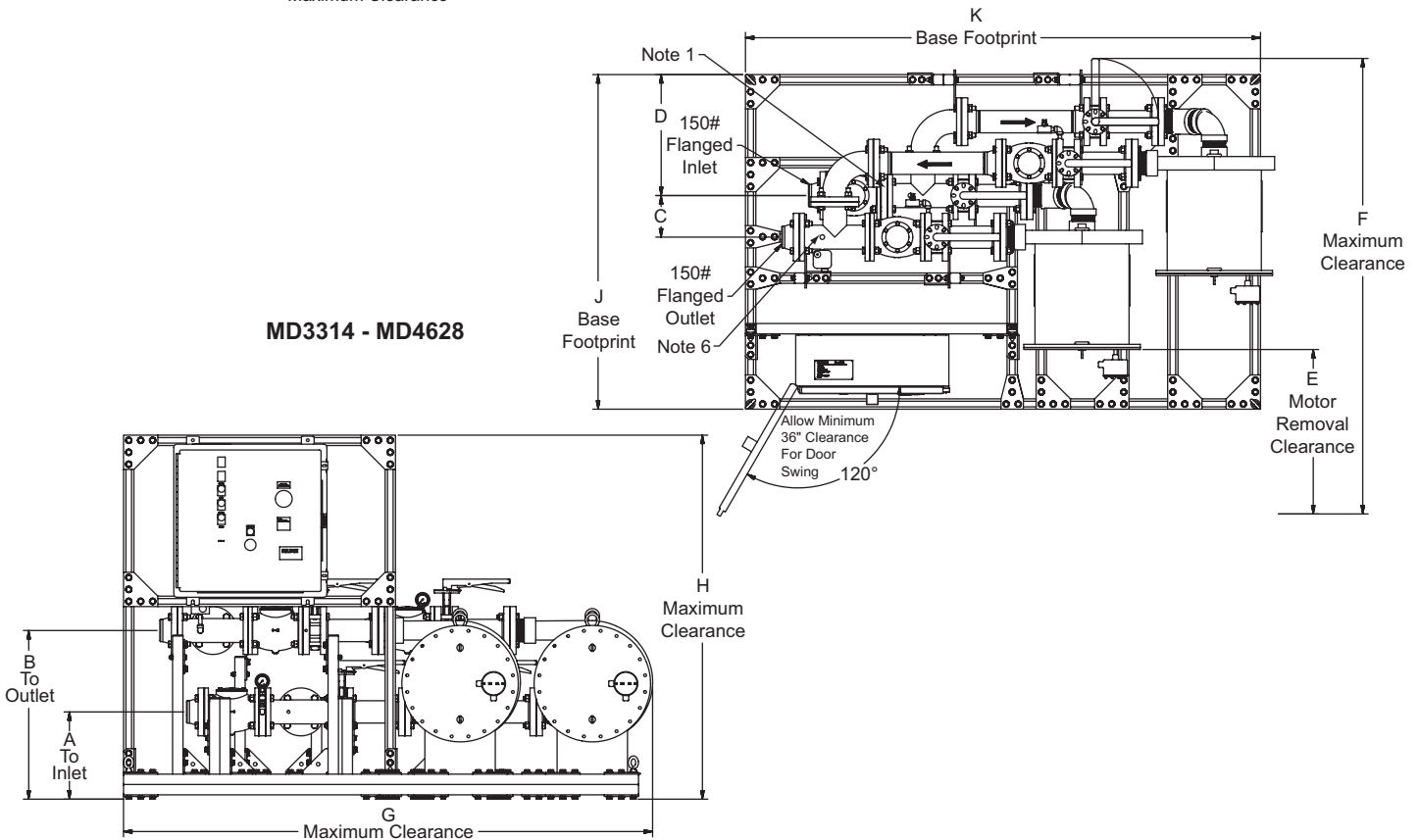
Notes: Dimensions shown are nominal. Variations of 2% may occur due to thread engagement and assembly tolerances.

**Dimensions in Millimeters (inches)
Medium Flow Duplex**

MD3316



MD3314 - MD4628



Note 1 Pressure Switch Kit location when factory mounted.

Note 2 When Pressure Switch Kit is supplied loose by Eclipse, it is to be installed by customer in accordance with local codes.

Note 3 Customer is to secure Boostpak to foundation through unistrut base (customer drilled holes).

Note 4 Dimensions shown are nominal. Variations of 2% may occur due to thread engagement and assembly tolerances.

Note 5 Ensure proper clearances for motor removal.

Note 6 Flow control kit location, when factory mounted.

Data 630-6 12/8/2008



Offered By:

Power Equipment Company
2011 Williamsburg Road
Richmond, Virginia 23231
Phone (804) 236-3800
Fax (804) 236-3882

www.peconet.com